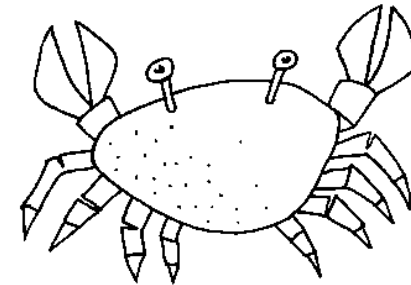


## Directions:

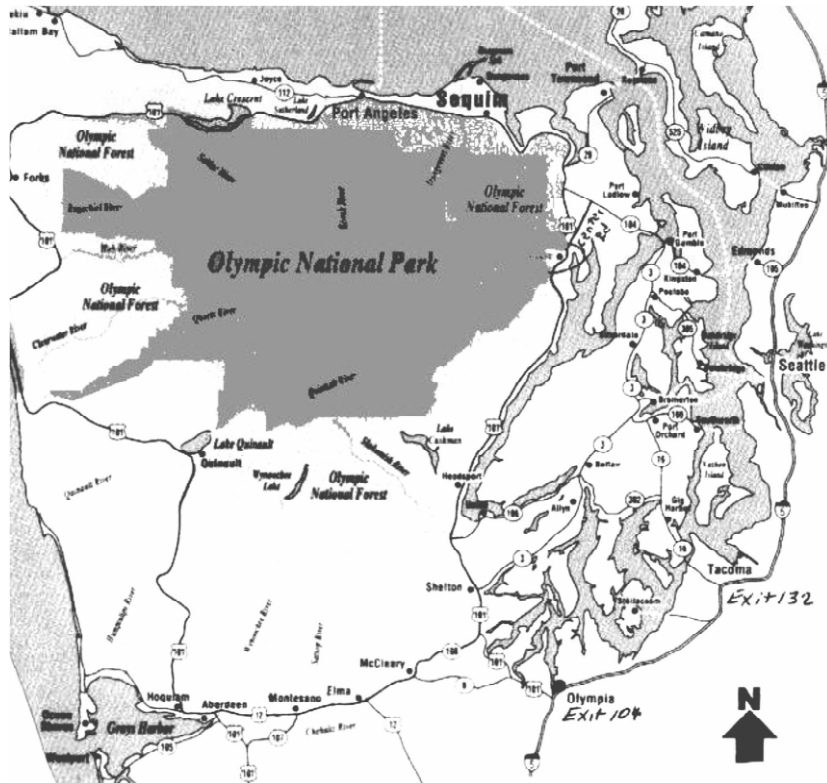
From Olympia take US 101 (Exit 104 from I 5) and proceed through Shelton and up the Hood Canal to Port Angeles. US101 splits and becomes Front St. Turn left on 2<sup>nd</sup> light on Race St. Drive uphill and turn right at 4-way stop at Park St. At Port Angeles High School, park in lot across the street from the front of the school.

From Seattle cross Puget Sound by ferry or bridge and proceed to the Hood Canal Bridge. Cross Hood Canal and continue on SR 104 till it merges with US 101. Follow US 101 to Port Angeles. US101 splits and becomes Front St. Turn left on 2<sup>nd</sup> light on Race St. Drive uphill and turn right at 4-way stop at Park St. At Port Angeles High School, park in lot across the street from the front of the school.

# Port Angeles Crab Fest Walk Event Saturday October 11<sup>th</sup> 2025



Starting Point:  
Port Angeles High School  
304 E. Park Ave  
Port Angeles, Washington



**AMERICA'S  
WALKING CLUB**  
— ESTABLISHED 1976 —

**SANCTIONED EVENT**

Eligible for credit towards IVV Achievement Awards



**INVITATION:** The *Evergreen State Volkssport Association*, and the *Olympic Peninsula Explorers Volkssport Club* welcome everyone wishing to join us in a 5, 6 or 11 km walk. This event is sanctioned by the American Volkssport Association (AVA), a member of the International Federation of Popular Sports. This event counts towards the acquisition of IVV Achievement Awards.

**SANCTION NO: 127039**

**LOCATION:** Port Angeles High School  
304 E Park Ave,  
Port Angeles Washington

**AVA CHALLENGES:** A-Z, Rails to Trails

**WA STATE CHALLENGES:** Clallam County

**START/FINISH TIME:** 8:00 am - 2:00 pm

**TRAIL: 5 km (2B), 6km (2A), 11km (2B).** Time to eat Dungenies! Loop #1: Walk on well-groomed trails to the Olympic National Park headquarters. Loop #2: Walk on sidewalks to the harbor for the feast. See Vancouver Island and the Olympics. More info on the Dungeness Crab and Seafood Festival: <https://www.crabfestival.org/> to see the schedule of events and pre-order your Dungeness Crab!

**AWARD:** IVV Credit is \$4.00. All participants are welcome and must sign the event waiver. Guests are welcome to join us. Donations to support activities like this are appreciated.

**VOLKSSPORT:** “*Sport of the People*,” is an adventure in health, recreation, fellowship and fun. It provides recreation and fitness opportunities to people of all ages and abilities. This event enables you to earn recognition while participating in a non-competitive sport. Our marked course is a great family activity and even the family dog can go along. The volkssporting philosophy recognizes that every participant in this event is a winner and eligible for credit and an award.

**PROCEDURES:** There will be direction signs; look for the large IVV banner when arriving at the Port Angeles High School parking lot. Registration is inside the school.

**NEW WALKER PACKETS:** The American Volkssport Association offers new participants and/or Volkssporters not active in IVV’s award program, a packet with an event and distance book and three coupons for credit at AVA sanctioned events. **This \$21.00 value costs only \$5.00** and will be available at the registration desk. Packets are a one-time purchase, and not available to Volkssporters active in the IVV awards program.

**GUEST PARTICIPANTS:** Participation in most IVV/AVA Sanctioned Volkssporting Events is free to all participants. However, everyone, including children, must register and are encouraged to donate to OPE.

**MISCELLANEOUS:** Water and restrooms at the Start/Finish and along the route. Pets are permitted but not in the building(s). Owners are responsible for leash and clean-up laws.

**WAIVER:** The American Volkssport Association or its subsidiary clubs are not responsible for theft or loss of personal belongings or property. Every effort will be made to make this event safe, enjoyable, and memorable. *PARTICIPANTS MUST SIGN THE EVENT WAIVER. A RESPONSIBLE ADULT MUST SIGN FOR ALL MINORS.*

**ADDITIONAL INFO:** Call Clay Baulch (210) 204-9301 or write to: Olympic Peninsula Explorers, P.O. Box 1706; Sequim, WA 98382.

EMAIL: [cbaulch31@gmail.com](mailto:cbaulch31@gmail.com)

Visit our website: [www.opevolkssport.org](http://www.opevolkssport.org)

**NOTE: There are 50 Geocache sites in Port Angeles – 20-30 in the downtown area.**